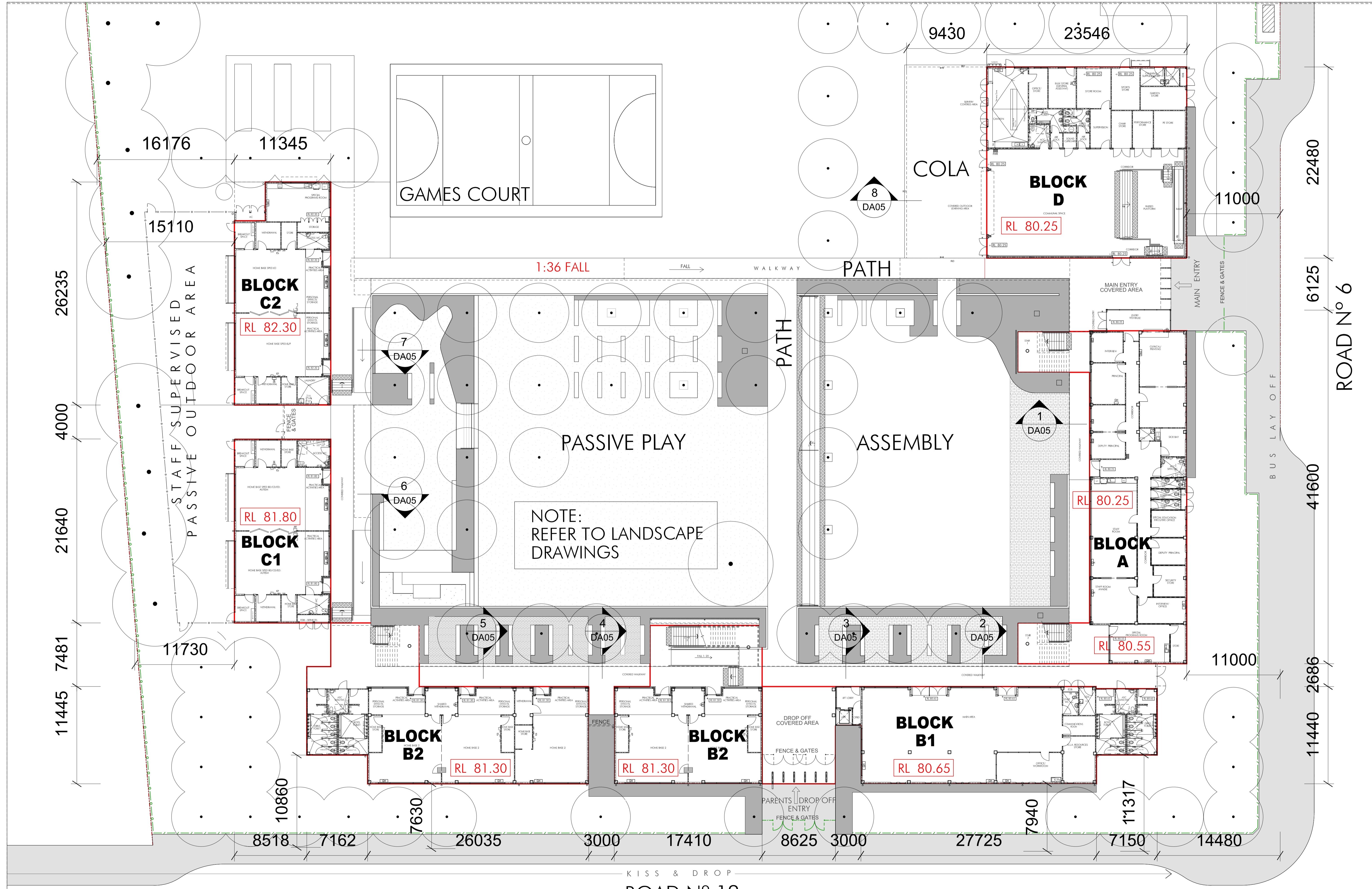


LOCATION PLAN NTS

GROSS INTERNAL COVERED AREA					
BLOCK	GROUND FLOOR		FIRST FLOOR		TOTAL AREA
	ACCOMM.	AREA	ACCOMM.	AREA	
BLOCK A	ADMIN	455m <sup>2</sup>	HOMEBASES	432m <sup>2</sup>	887m <sup>2</sup>
BLOCK B1	LIBRARY	380m <sup>2</sup>	HOMEBASES	382m <sup>2</sup>	762m <sup>2</sup>
BLOCK B2	HOMEBASES	545m <sup>2</sup>	HOMEBASES	643m <sup>2</sup>	1188m <sup>2</sup>
BLOCK C1	SPED	243m <sup>2</sup>	-----	---	243m <sup>2</sup>
BLOCK C2	SPED	282m <sup>2</sup>	-----	---	282m <sup>2</sup>
BLOCK D	HALL	529m <sup>2</sup>	-----	---	529m <sup>2</sup>
<b>TOTAL</b>		<b>2,434m<sup>2</sup></b>		<b>1,457m<sup>2</sup></b>	<b>3,891m<sup>2</sup></b>

OUTDOOR COVERED AREA		
GROUND FLOOR	COVERED WALKWAYS & STAIRS	1,195m <sup>2</sup>
	C.O.L.A.	212m <sup>2</sup>
FIRST FLOOR	COVERED WALKWAYS	370m <sup>2</sup>
<b>TOTAL</b>		<b>1,777m<sup>2</sup></b>

DA01-REV D - 14 09 02



1 The Government Architect's Office, a division of the Department of Finance & Services (the Department) shall not be liable or responsible for any loss or damage arising out of the conversion of any electronic document, data or program to any other format or medium, or arising out of any modification or changes that occur in the handling or use of the electronic document, data or program.

2 The recipient or user of any electronic document, data or program is solely responsible for ascertaining its accuracy and its suitability for their purposes.

3 The Department uses virus scanning software to prevent file and system virus attacks but gives no warranty. The recipient or user is solely responsible for their own virus protection.

KEY

--- EXISTING SITE BOUNDARY

--- FENCE LINE

SEPARATE SLAB / CONSTRUCTION JOINT

STRUCTURAL/CIVIL  
Northern Consulting Engineers  
T 4226 3333 F 4226 3666

ARCHITECTURAL  
GOVERNMENT ARCHITECTS OFFICE  
T 9372 8411 F 9372 8399

QUANTITY SURVEYOR  
GOVERNMENT ARCHITECTS OFFICE  
T 9372 8311 F 9372 8444

PROJECT MANAGEMENT  
NEW PUBLIC WORKS  
T 8339 5905

Public Works  
Government Architect's Office

PETER POULET  
NSW Government Architect  
Noted Architect ARN 5354  
Level 18, Macquarie Building, 224 Macquarie Place  
Sydney NSW 2000 AUSTRALIA

A division of the Department of Finance & Services  
LAURIE GLANFIELD  
Director General

DEC  
DEPARTMENT OF EDUCATION AND COMMUNITIES

SPRING FARM PUBLIC SCHOOL

GROUND FLOOR PLAN

1:200 @ A1  
1:400 @ A3

CS 2/09/2014

GAO GAO

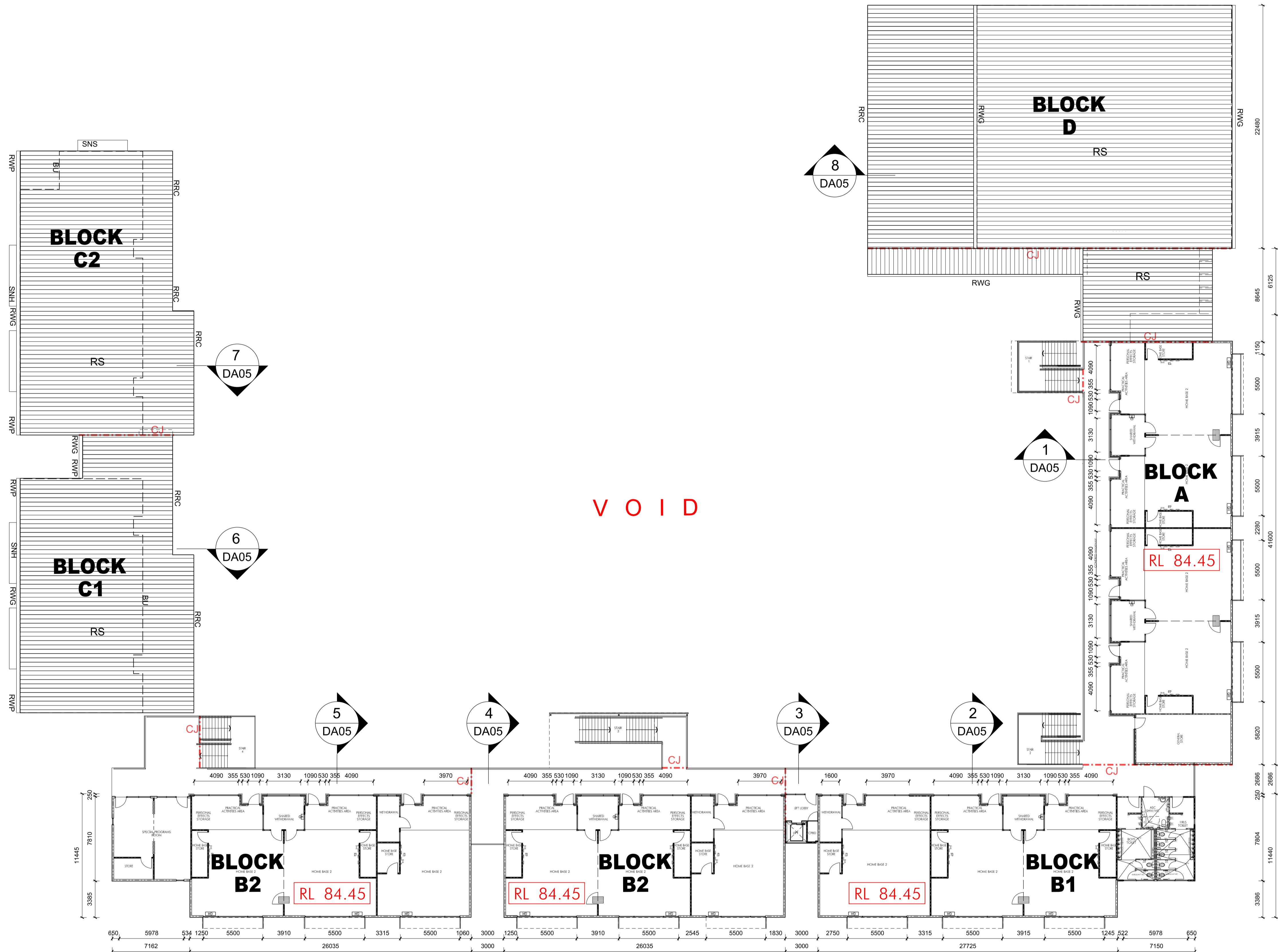
DA02

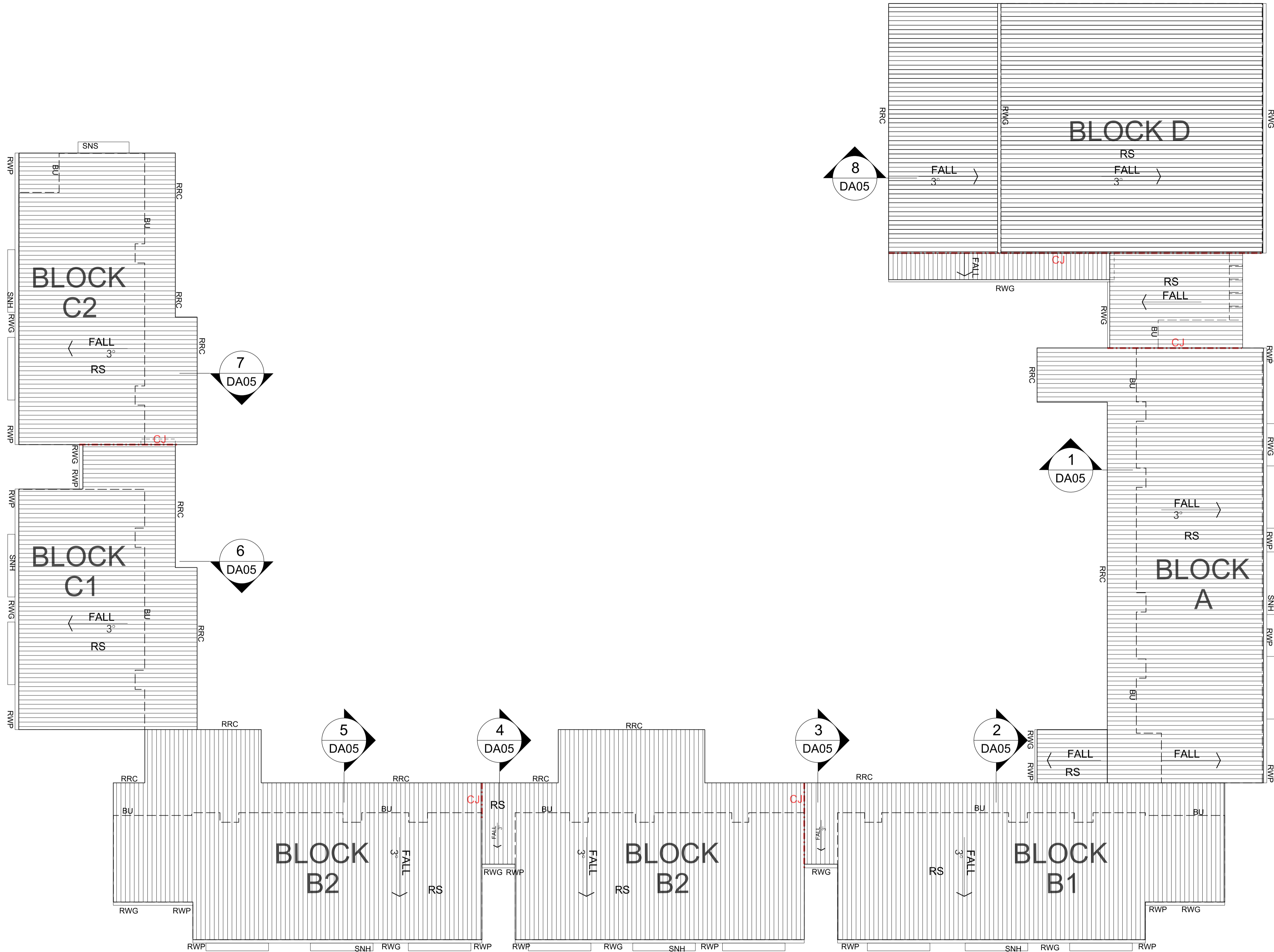
USE FIGURED DIMENSIONS IN PREFERENCE TO SCALING  
CHECK ALL DIMENSIONS ON SITE

200MM 300MM ON ORIGINAL

© CROWN IN RIGHT OF NSW THROUGH THE DEPARTMENT OF FINANCE & SERVICES

2/09/2014 2:52:58 PM G:\Projects\Educ\PS\Spring Farm\MP4 - doAren\DA-DRAWINGS\DA02\_Spr-PS-PLANS-GROUND.plt \$NOBES





1 The Government Architect's Office, a division of the Department of Finance & Services (the Department) shall not be liable or responsible for any loss or damage arising out of the conversion of any electronic document, data or program to any other format or medium, or arising out of any modification or changes that occur in the handling or use of the electronic document, data or program.

2 The recipient or user of any electronic document, data or program is solely responsible for ascertaining its accuracy and its suitability for their purposes.

3 The Department uses virus scanning software to prevent file and system virus attacks but gives no warranty. The recipient or user is solely responsible for their own virus protection.

A1 10 20 30 40 100 USE FIGURED DIMENSIONS IN PREFERENCE TO SCALING CHECK ALL DIMENSIONS ON SITE

200MM

300MM ON ORIGINAL

© CROWN IN RIGHT OF NSW THROUGH THE DEPARTMENT OF FINANCE & SERVICES

STRUCTURAL/CIVIL  
Northern Consulting Engineers  
T 4226 3333 F 4226 3666

ARCHITECTURAL  
GOVERNMENT ARCHITECT'S OFFICE  
T 9372 8411 F 9372 8399

QUANTITY SURVEYOR  
GOVERNMENT ARCHITECT'S OFFICE  
T 9372 8311 F 9372 8444


PROJECT MANAGEMENT  
NSW PUBLIC WORKS  
T 6339 5905




Public Works  
Government Architect's Office

PETER POULET  
NSW Government Architect  
Notified Architect ARN 6354  
Level 15 Murrumbidgee Building, 224 Rowson Place  
Sydney NSW 2000 AUSTRALIA  
A division of the Department of Finance & Services  
LAURIE GLANFIELD  
Director General





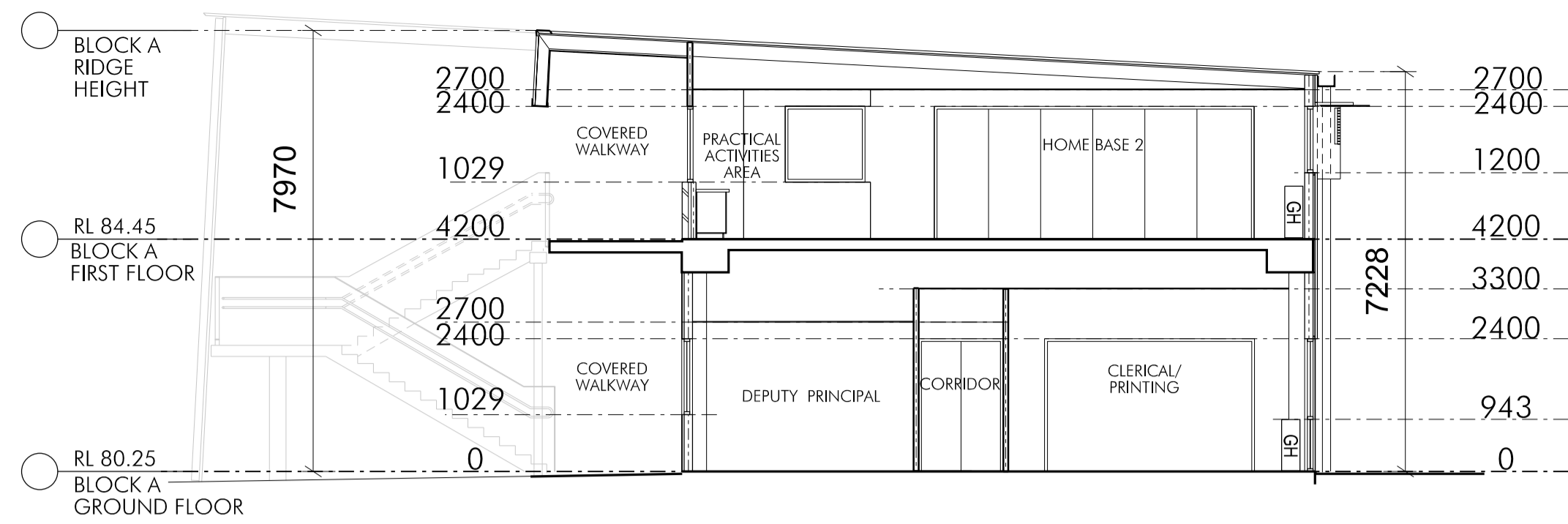
SPRING FARM  
PUBLIC SCHOOL



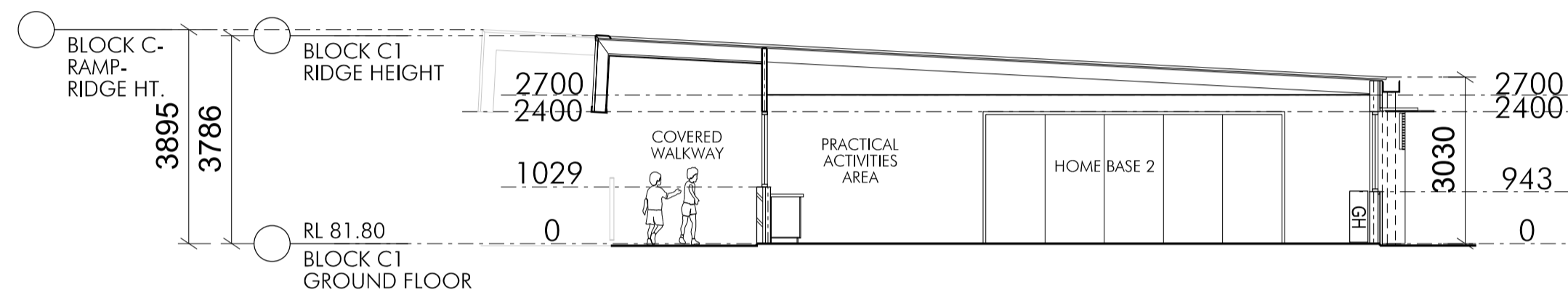
ROOF PLAN

1:200 @ A1 1:400 @ A3	
CS	2/09/2014
GAO	GAO

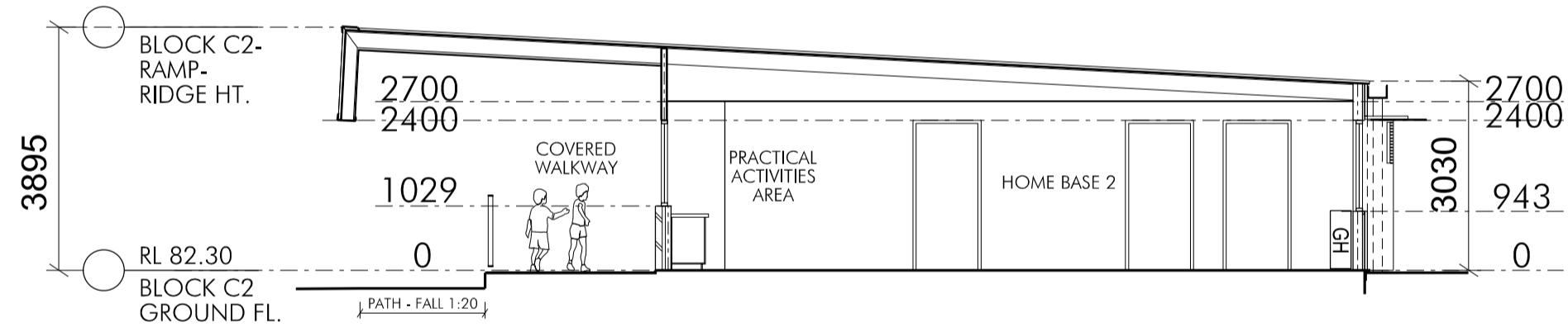
DA04
------



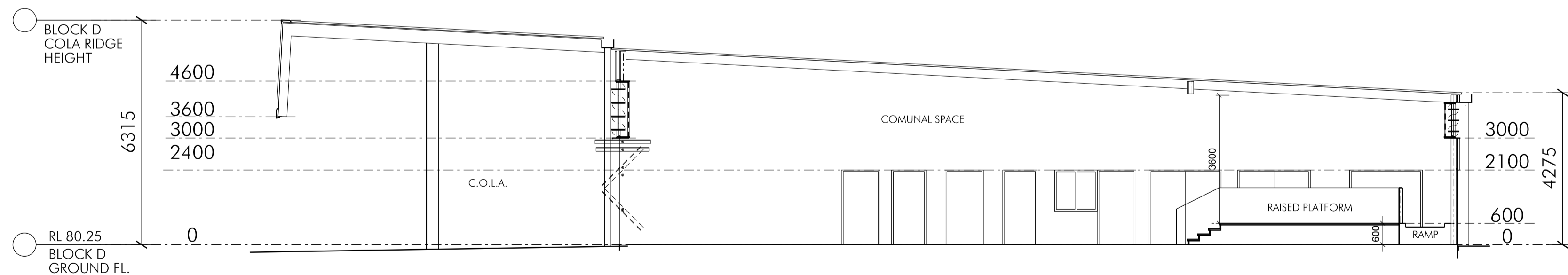
1 SECTION - BLOCK A



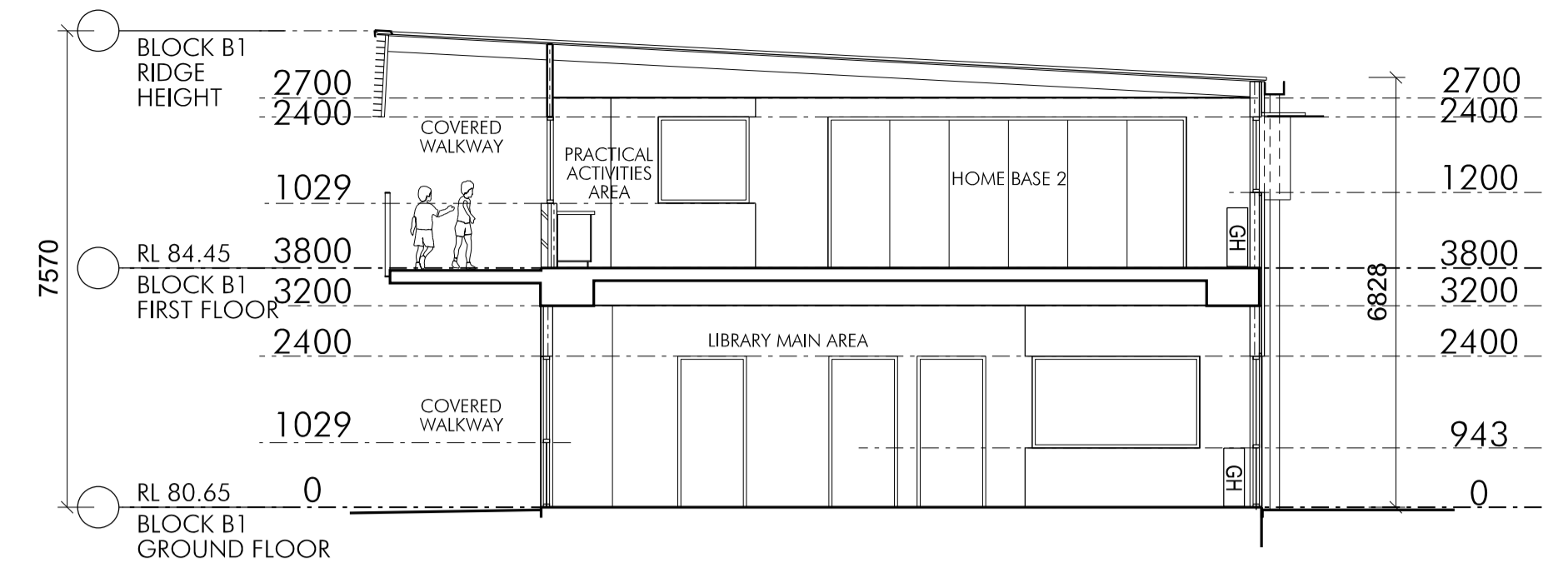
6 SECTION - BLOCK C1



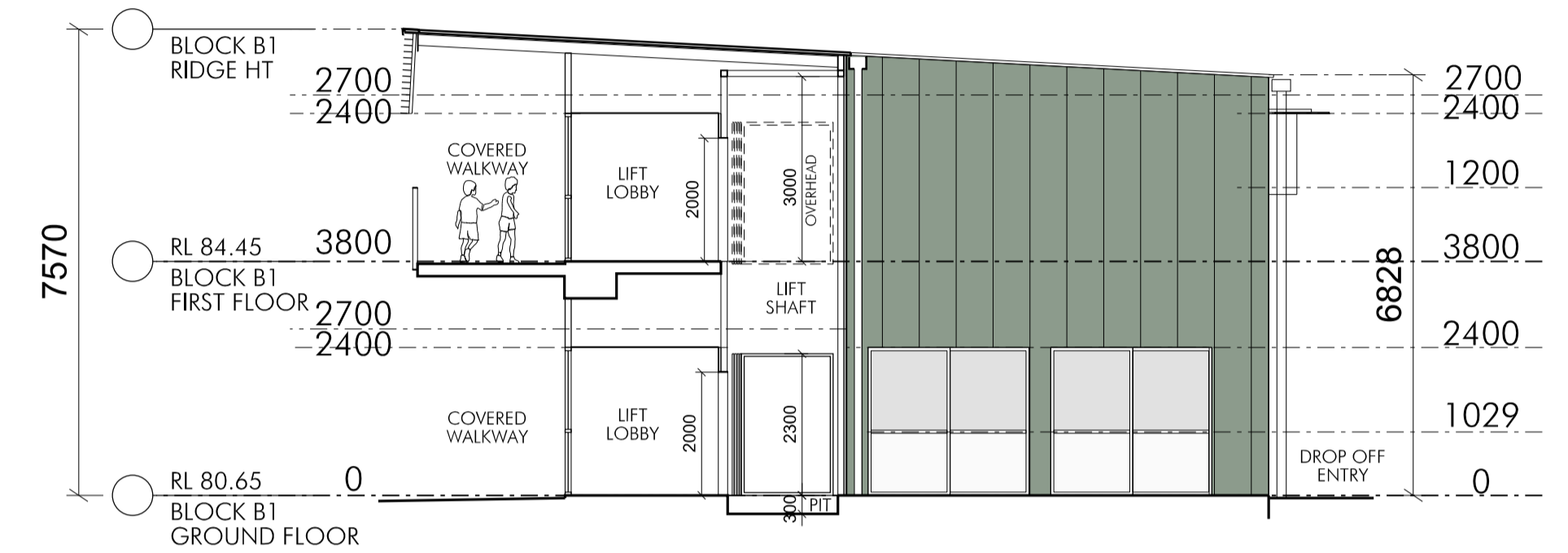
7 SECTION - BLOCK C2



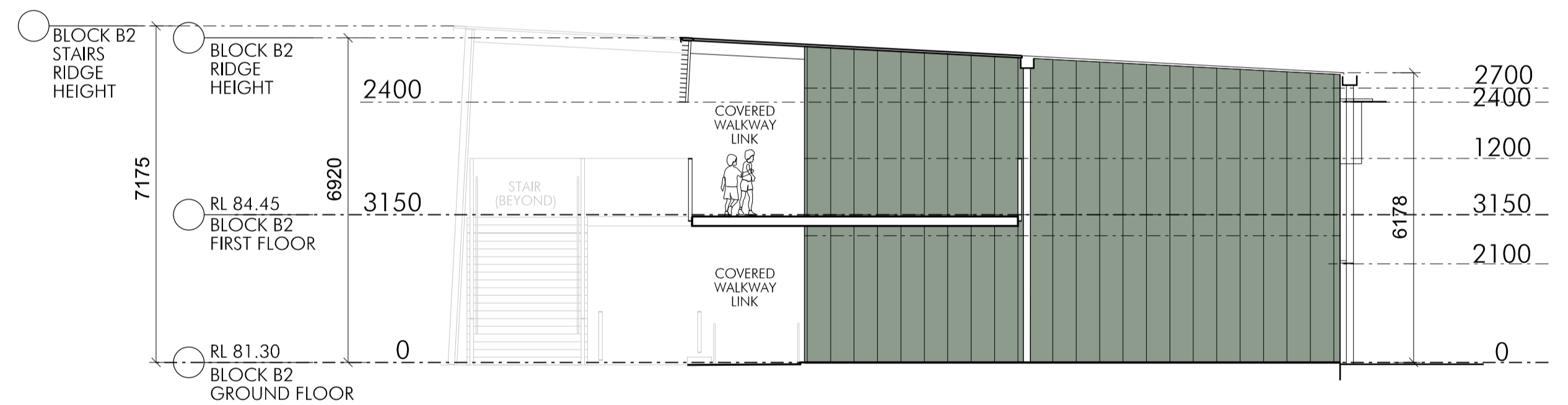
8 SECTION - BLOCK D



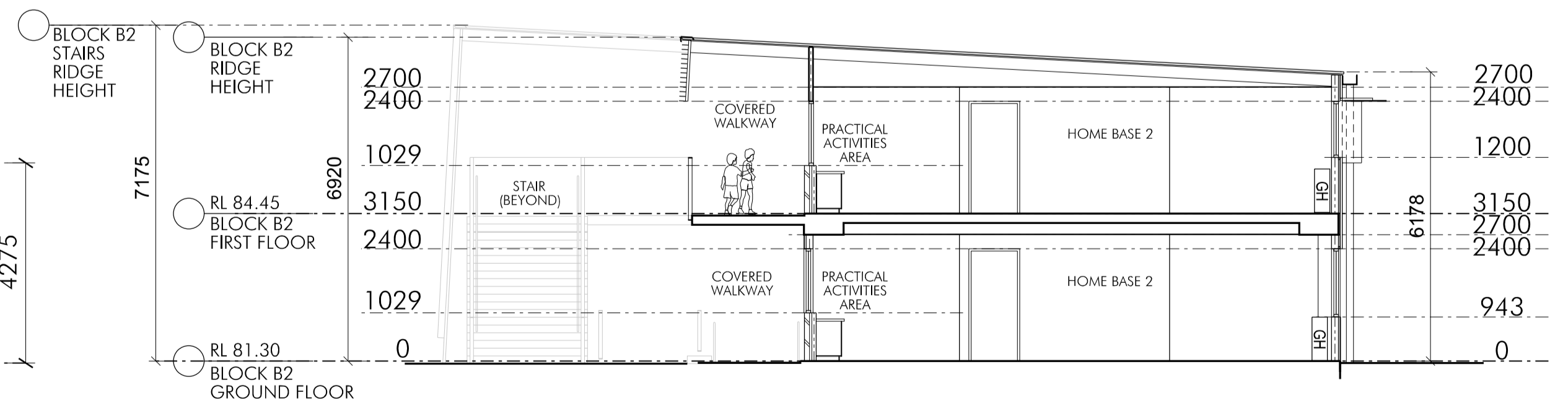
2 SECTION - BLOCK B1



3 SECTION - BLOCK B1



4 SECTION - BLOCK B2



5 SECTION - BLOCK B2

1 The Government Architect's Office, a division of the Department of Finance & Services (the Department) shall not be liable or responsible for any loss or damage arising out of the conversion of any electronic document, data or program to any other format or medium, or arising out of any modification or changes that occur in the handling or use of the electronic document, data or program.

2 The recipient or user of any electronic document, data or program is solely responsible for ascertaining its accuracy and its suitability for their purposes.

3 The Department uses virus scanning software to prevent file and system virus attacks but gives no warranty. The recipient or user is solely responsible for their own virus protection.

STRUCTURAL/CIVIL  
Northern Consulting Engineers  
T 4226 3333 F 4226 3666

ARCHITECTURAL  
GOVERNMENT ARCHITECT'S OFFICE  
T 9372 8411 F 9372 8399

QUANTITY SURVEYOR  
GOVERNMENT ARCHITECT'S OFFICE  
T 9372 8311 F 9372 8444

PROJECT MANAGEMENT  
NSW PUBLIC WORKS  
T 8339 5905



Public Works  
Government Architect's Office

PETER POULET  
NSW Government Architect  
Noted Architect ARN 5354  
Level 15, Mitchell Building, 254 Rawson Place  
Sydney NSW 2000 AUSTRALIA  
A division of the Department of Finance & Services  
LAURIE GLANFIELD  
Director General



SPRING FARM  
PUBLIC SCHOOL

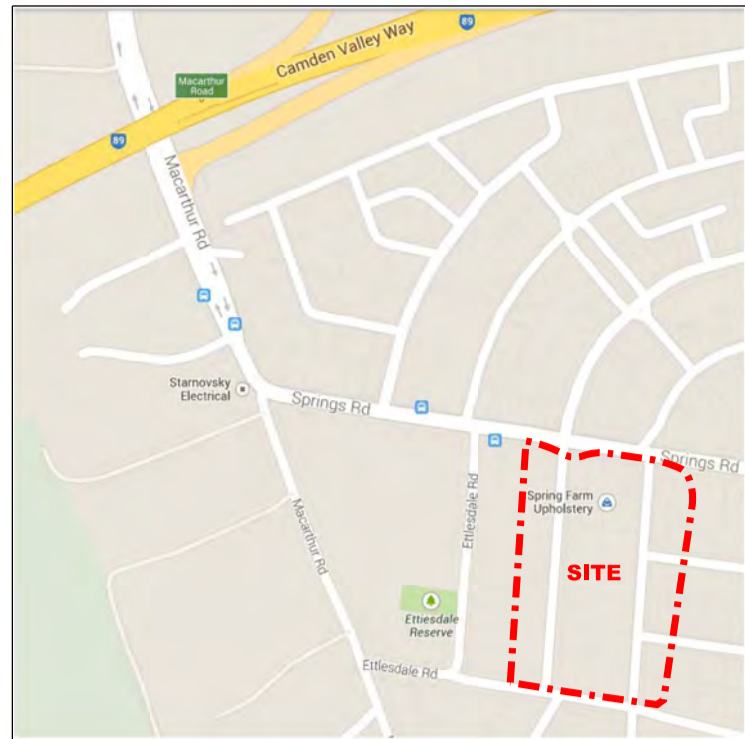
TYPICAL SECTIONS

1:100 @ A1  
1:200 @ A3

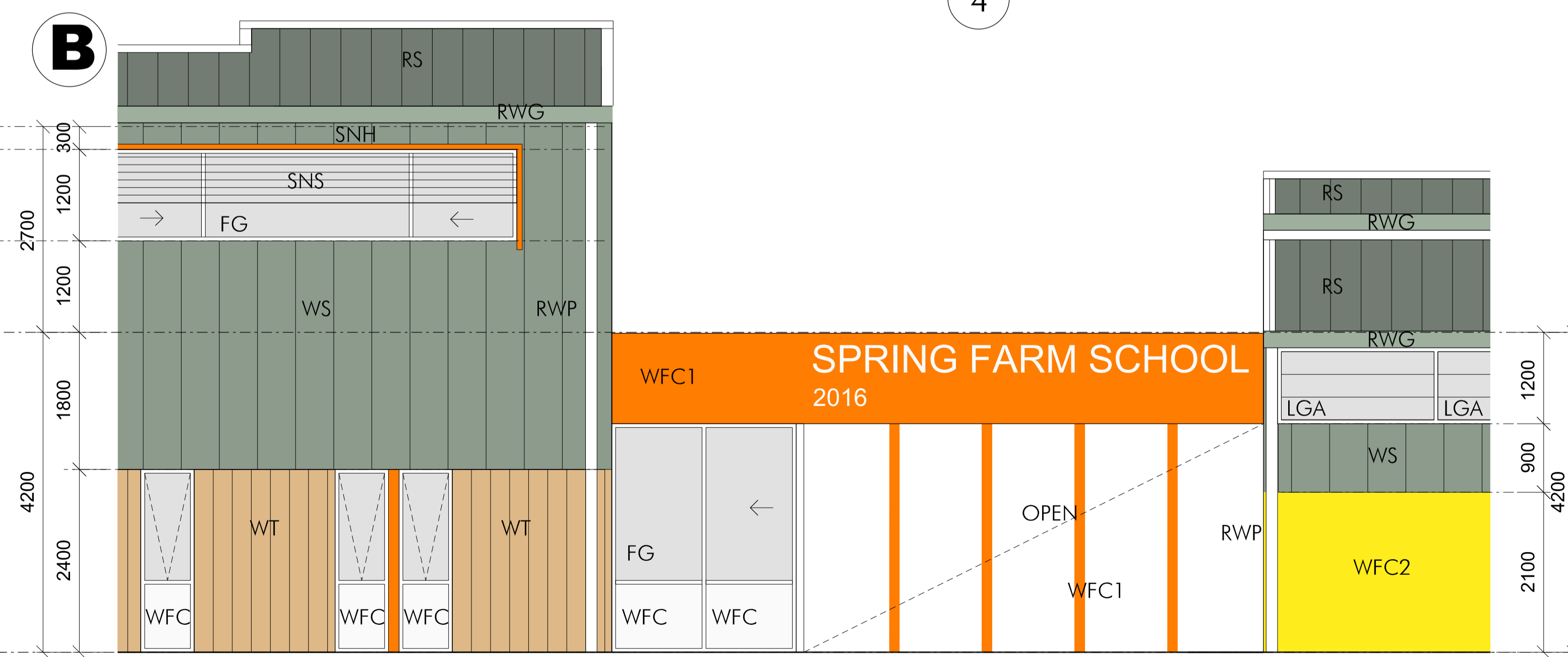
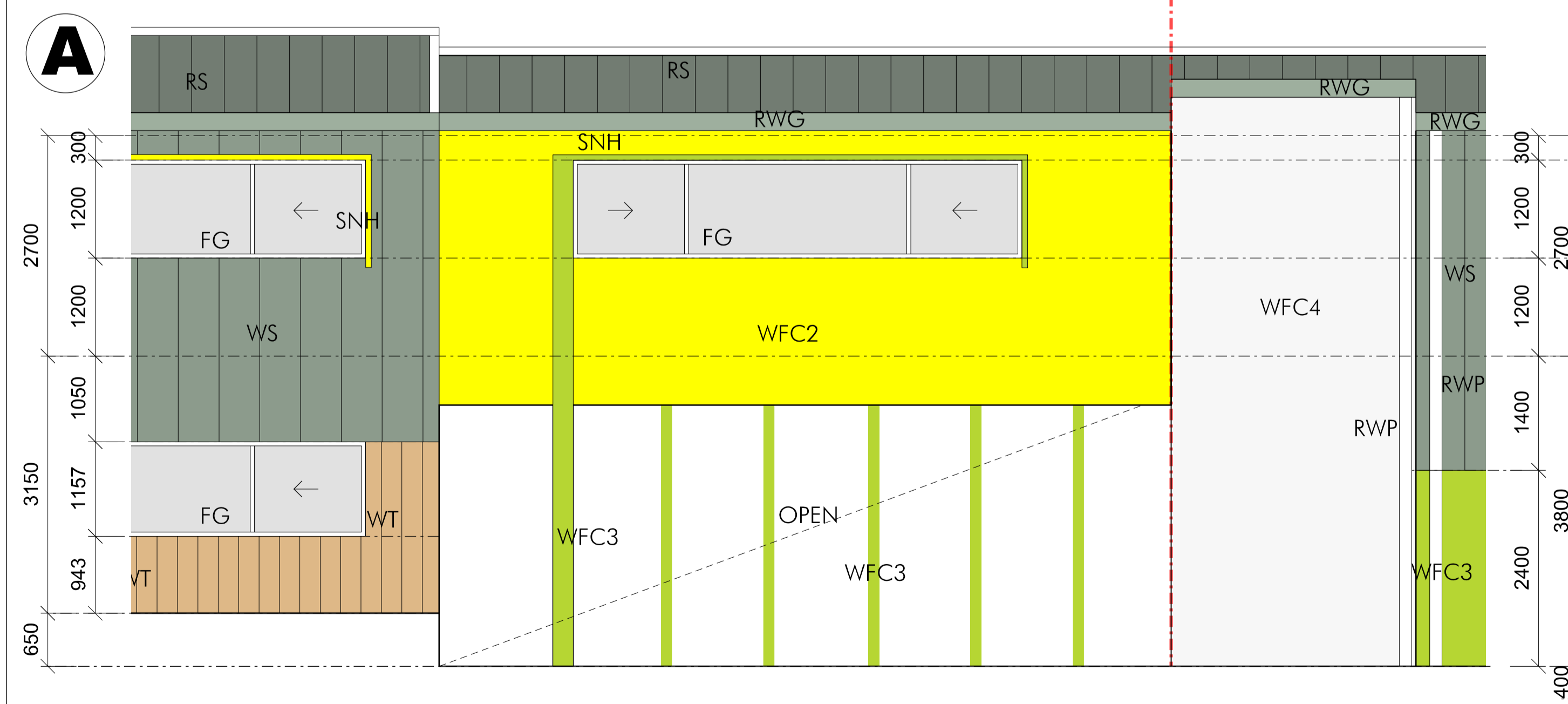
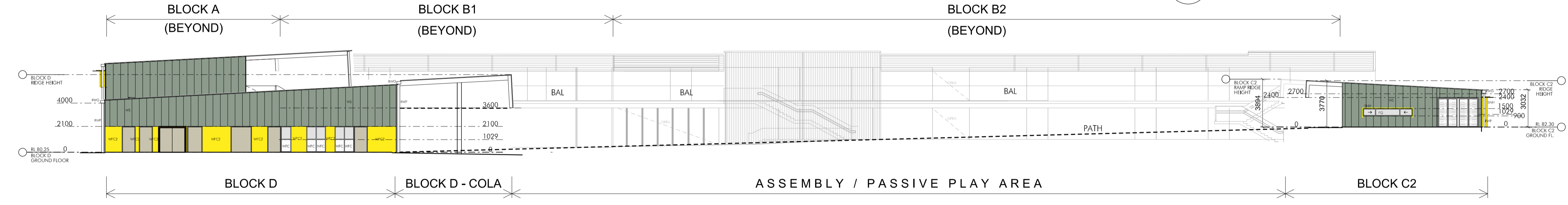
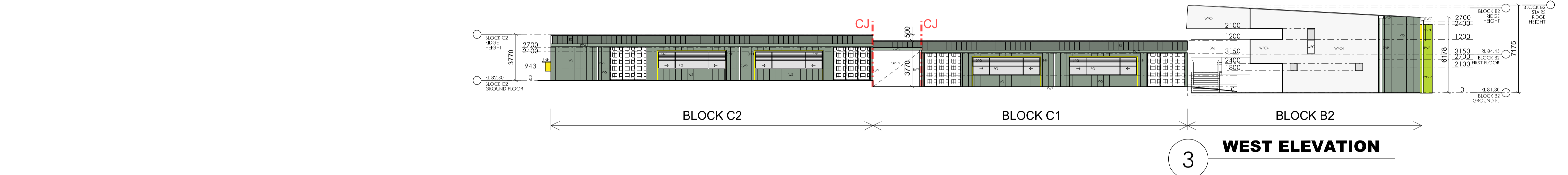
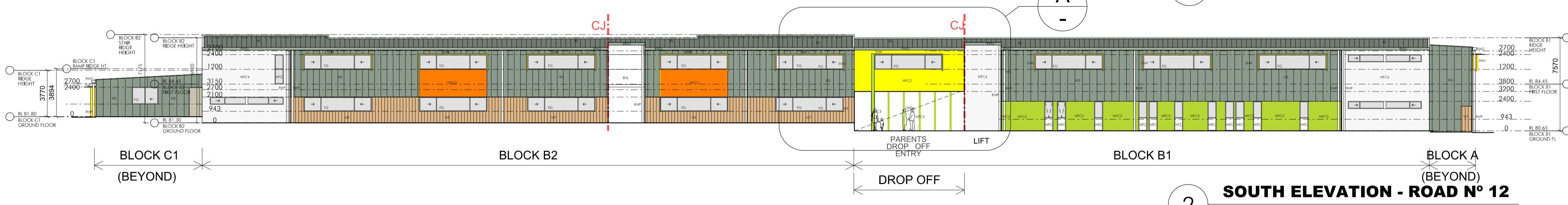
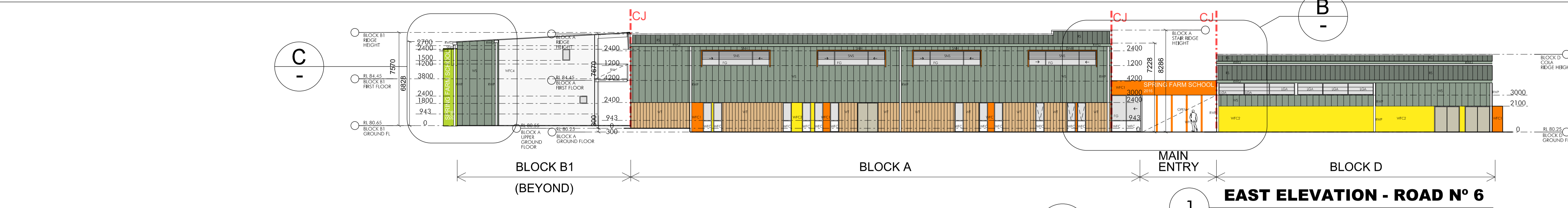
CS 2/09/2014

GAO GAO

DA05



LOCATION PLAN NTS



1 The Government Architect's Office, a division of the Department of Finance & Services (the Department) shall not be liable or responsible for any loss or damage arising out of the conversion of any electronic document, data or program to any other format or medium, or arising out of any modification or changes that occur in the handling or use of the electronic document, data or program.

2 The recipient or user of any electronic document, data or program is solely responsible for ascertaining its accuracy and its suitability for their purposes.

3 The Department uses virus scanning software to prevent file and system virus attacks but gives no warranty. The recipient or user is solely responsible for their own virus protection.

**KEY:**

RS - METAL ROOF SHEETING	WFC1
WS - METAL CLADDING	WFC2
WT - FEATURE WALL	WFC3
WFC - FIBRE CEMENT SHEETING	WFC4

**LEGEND**

BAL	BALUSTRADE
FG	FIXED GLAZING
LGA	ADJUSTABLE GLASS LOUVRE
RS	ROOF SHEETING
RWG	ZINC/ ALUMINIUM RAINWATER GUTTER
RWP	CHS RAINWATER DOWN PIPE
SNH	SUNHOOD
SNS	SUNSCREEN
WBF	FACE BRICKWORK
WFC	FIBRE CEMENT WALL SHEETING
WT	COMPOSITE TIMBER CLADDING
WS	WALL SHEETING

**STRUCTURAL/CIVIL**  
Northern Consulting Engineers  
T 4226 3333 F 4226 3666

**ARCHITECTURAL**  
GOVERNMENT ARCHITECT'S OFFICE  
T 9372 8411 F 9372 8399

**QUANTITY SURVEYOR**  
GOVERNMENT ARCHITECT'S OFFICE  
T 9372 8311 F 9372 8444

**PROJECT MANAGEMENT**  
NEW PUBLIC WORKS  
T 8339 5905

**NSW** **GOVERNMENT**

**Public Works**  
Government Architect's Office

PETER POULET  
NSW Government Architect  
Noted Architect ARN 5354  
Level 15 Murrumbidgee Building, 244 Rawson Place  
Sydney NSW 2000 AUSTRALIA

A division of the Department of Finance & Services  
LAURIE GLANFIELD  
Director General

**DEC**  
DEPARTMENT  
OF EDUCATION  
AND COMMUNITIES

**SPRING FARM  
PUBLIC SCHOOL**

**ELEVATIONS**

1:200 - 1:50 @ A1	2/09/2014
1:400 - 1:100 @ A3	
CS	GAO
GAO	GAO

**DA06**